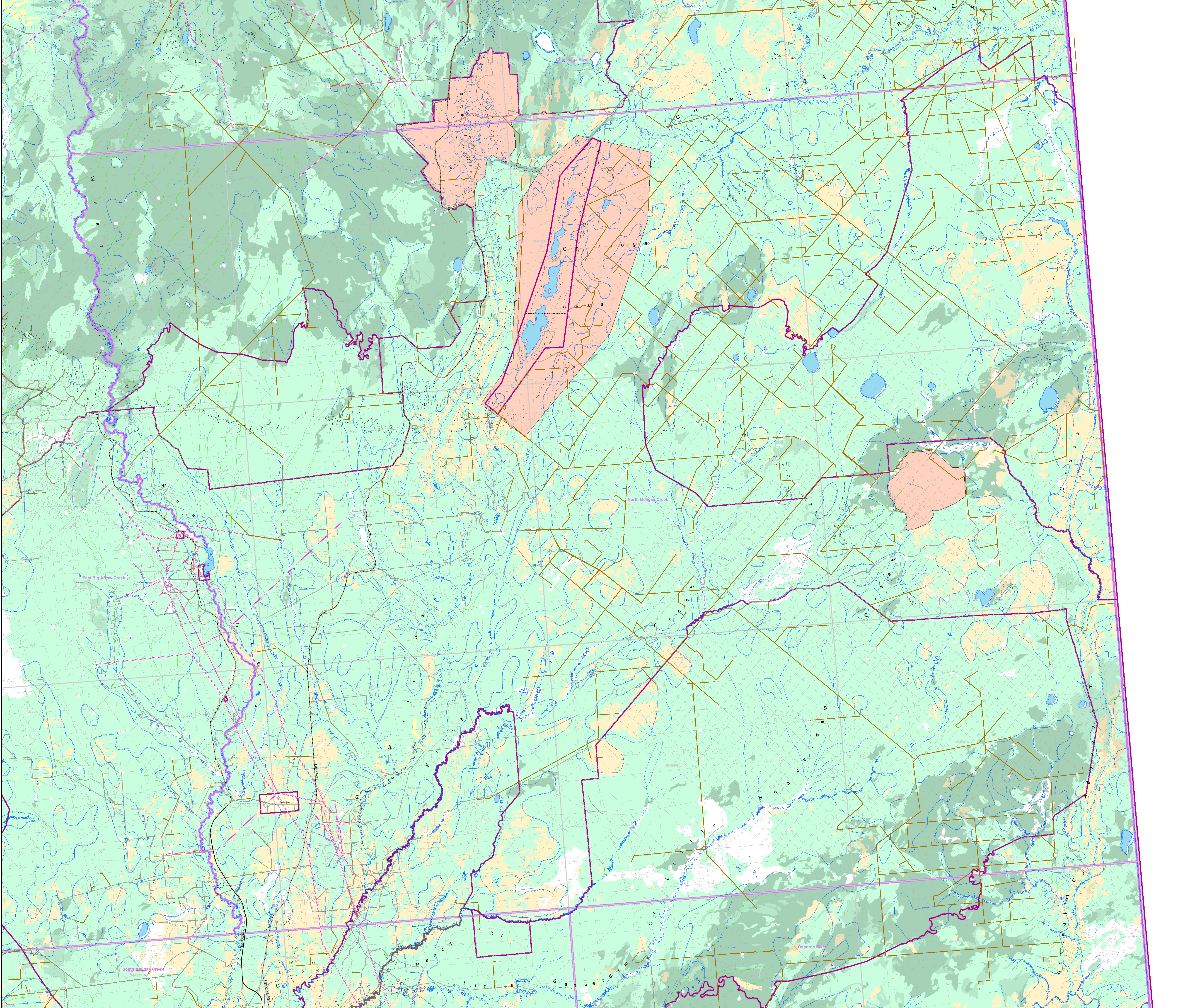
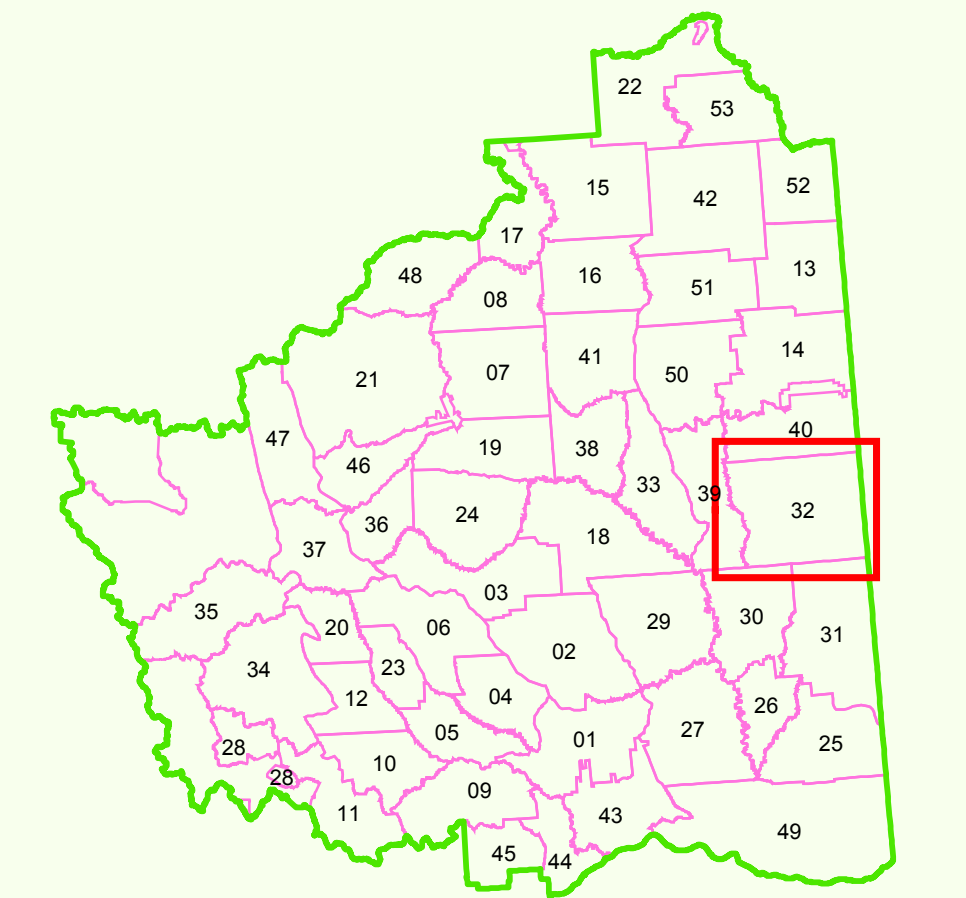


Operating Area:
32 - North Milligan Creek



Map Legend

<p>Cutblocks</p> <ul style="list-style-type: none"> FOS Proposed (2017) FOS Proposed (Carryover) Authorized Harvested Free Growing Wildlife Tree Patch / Reserve <p>Ownership Codes</p> <ul style="list-style-type: none"> BC: BCTS (conifer) BCA: BCTS (deciduous) BCB: BCTS (conifer or deciduous) CC: Canfor (conifer) CS: Canfor (deciduous) CSL: Cameron Pacific Logging DZ: Dunne-Za / Control LP: Louisiana-Pacific Canada MPAC: Mackenzie Pulp Mill Corporation a Paper Excellence Company PV: Peace Valley OSB <p>Tembec PA13 Blocks</p> <ul style="list-style-type: none"> Proposed Block Harvested Free Growing <p>Transportation / Utilities</p> <ul style="list-style-type: none"> Highways Existing Roads Proposed Roads FOS Proposed Roads (2017) Deactivated Roads TRM II Roads / Digital Road Atlas OGC Roads Pipeline Railway Electricity Transmission Line Seismic Line <p>Road Structures</p> <ul style="list-style-type: none"> Gate Bridge Cattle Guard <p>Hydrography</p> <ul style="list-style-type: none"> Lakes, Rivers Wetlands Definite Stream Indefinite Stream Non-Fish, Query Non-Fish, Inventory Fish, Inventory Riparian Classification 	<p>Administrative</p> <ul style="list-style-type: none"> BCGS Mapsheets Operating Area Boundaries Woodlot License Areas Private First Nations Reserve First Nations Claim Area Ecological Reserve, Park, Protected Areas Muskwa Kechika Boundary FOS Old Forest Management Area IRP Alpine Zone IRP Riparian Zone Major River Corridors Range Tenures Ungulate Winter Range Wildlife Habitat Area Scenic Areas Visual Quality Objective Codes: <ul style="list-style-type: none"> P: Preservation PR: Partial Retention M: Modification MM: Maximum Modification <p>Contours</p> <ul style="list-style-type: none"> Index Contour Intermediate Contour Cut <p>Recreation</p> <ul style="list-style-type: none"> Recreation Site Recreation Trail Recreation Reserves / Sites <p>Seral Stage Theming</p> <ul style="list-style-type: none"> < 40 Coniferous / Deciduous 40 - 100 Coniferous 101 - 140 Coniferous 141+ Coniferous 40 - 100 Deciduous 101+ Deciduous Water
---	---

Scale: 0 0.75 1.5 2.25 3 Kilometers
 1:50,000

Projection: Albers
 False Easting: 1000000.000000
 False Northing: 5000000.000000
 Central Meridian: 120.000000
 Standard Parallel 1: 50.000000
 Standard Parallel 2: 50.000000
 Latitude Of Origin: 49.000000
 Units: Meter

Source: North American Datum 1983 (NAD83)
 Digital base map derived from TM25.0
 Contours derived from Digital Elevation Model (DEM)
 Digital datasets maintained and updated by Canfor.

Map date: 29 September 2017
 Map produced by: Verlynggen, Kim
 Map template used: FOS_Map_Template_Final_Map.mxd